



# THE ULTIMATE LIGHTING GUIDE

This Ultimate Lighting Guide is your shortcut to lighting your home like a designer. Designed for both renovators and new home builders, it's packed with tips, checklists, and insider secrets to help you choose the perfect lighting for every room and avoid costly mistakes, so you can create a beautiful, functional space with confidence.



LIGHT YOUR HOME LIKE A DESIGNER



# WELCOME TO *YOUR E-BOOK*

Lighting is one of the most powerful and often overlooked tools in shaping the feel, function, and flow of a home. The right plan doesn't just brighten a room, it sets the mood, defines spaces, and brings architecture and interiors to life. Whether you're renovating or building new, this guide is designed to help you approach lighting like a designer. Inside you'll find practical tips, inspiration, and checklists that take the guesswork out of decision-making, so you can avoid costly mistakes and create a home that feels considered, cohesive, and uniquely yours.

The **Ultimate Lighting Guide** is for anyone who wants to elevate their interiors from renovators seeking to refresh a single room to new-build homeowners aiming to design a whole-home lighting plan. By blending professional insights with simple, actionable advice, it equips you with the confidence to choose the right fixtures, styles, and placements to transform your everyday spaces into something extraordinary.

ABOUT NOOK COLLECTIONS

# YOUR *LIGHTING* EXPERTS

At Nook Collections, we believe lighting is more than just function - it's the finishing touch that brings warmth, intention, and timeless beauty into Australian homes. We curate exceptional designer lighting from leading Australian and international brands, carefully selected to balance style, quality, and longevity.

Our team isn't just knowledgeable; we're passionate about helping you make the right choices.

From statement pendants to subtle architectural fixtures, we're here to guide you towards lighting that reflects your vision and enhances your lifestyle. Whether you're seeking inspiration, clarity, or a trusted partner in the design process, Nook exists to make lighting simple, beautiful, and meaningful.

[BOOK A CONSULTATION](#)





Orb Air Pendant Light  
Project: Sorrento Residence by David Wilkes Design and Van Rhyn Designs  
Photography: Finesse Property Photography

# WHAT'S INSIDE THIS E-BOOK

**The Lighting Fundamentals** 06

---

Six Common Lighting Mistakes 07

---

The Lighting Types 08

---

Layer Your Lighting 09

---

IP Rating & Bathroom Zones 10

---

Colour Temperature 12

---

**Room by Room Guide** 14

---

Designing Your Space 26

---

The Design Process 27

---

Design Challenge 28

---

**Style, Material & Finish Matters** 31



# MODULE ONE



Coral Linear Rod 7lt Pendant Light

## THE LIGHTING FUNDAMENTALS

Great lighting starts with a few key principles that often go unnoticed but make all the difference in how a home feels and functions. From avoiding the most common mistakes, to understanding how different types of light work together, to knowing when safety and performance matter most, these fundamentals are the building blocks of a well-designed scheme.

In this section, we'll walk you through the essential concepts that every renovator or new-build should know, giving you the confidence to make choices that look beautiful, feel intentional, and stand the test of time.

### WHAT YOU'LL LEARN

- ◆ Learn how to avoid the most common lighting mistakes that leave spaces feeling flat or impersonal.
- ◆ Understand how to layer different types of light to shape atmosphere and mood in every room.
- ◆ Gain confidence choosing IP-rated lights that balance safety and style in bathrooms and wet areas.
- ◆ Explore how colour temperature affects the way your home feels, from calm and cosy to bright and energising.

*This guide is a starting point. Every home is unique.  
For personalised help, [reach out to our team](#).*

# SIX COMMON LIGHTING MISTAKES

Even the most beautiful interiors can fall flat with the wrong lighting plan. Here are the pitfalls designers avoid and how you can too:

WHAT NOT TO DO



## 1. OVER-RELIANCE ON DOWNLIGHTS

A ceiling scattered with downlights creates a flat, clinical effect. Instead, layer different light sources at varying heights to introduce depth, warmth, and visual interest.

## 2. MIXING COLOUR TEMPERATURES

Inconsistent tones: cool in one corner, warm in another, disrupt harmony. Select a consistent colour temperature throughout each space to create a cohesive flow.

## 4. NEGLECTING DIMMERS

Lighting without dimmers is one-dimensional. The ability to adjust instantly transforms mood from vibrant and social to soft and intimate with a single touch.

## 5. DISPROPORTIONATE FIXTURES

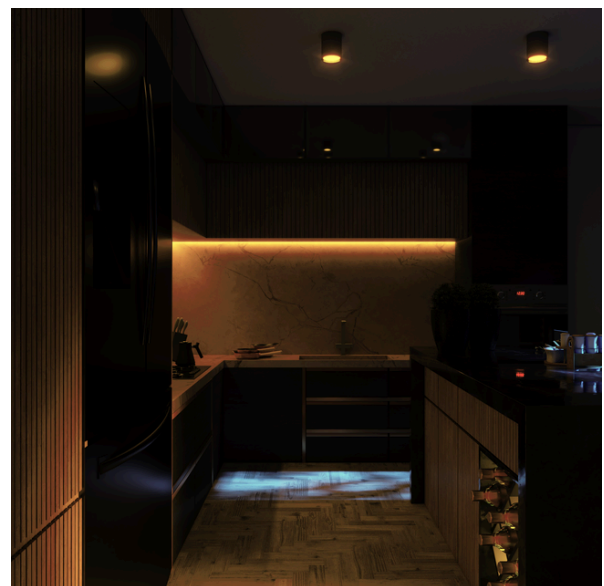
Scale matters. A fixture that is too small feels apologetic; too large, and it overwhelms. Select lighting proportionate to the architecture and furniture for balance.

## 6. LACK OF INTENTION

Every room deserves lighting that reflects its purpose whether it's a retreat for relaxation or a workspace demanding clarity. Begin with the room's atmosphere in mind, then let the lighting enhance it.

## 3. INSUFFICIENT TASK LIGHTING

Kitchens, bathrooms, and workspaces demand focused illumination. Without it, daily rituals become strained and design loses its edge.



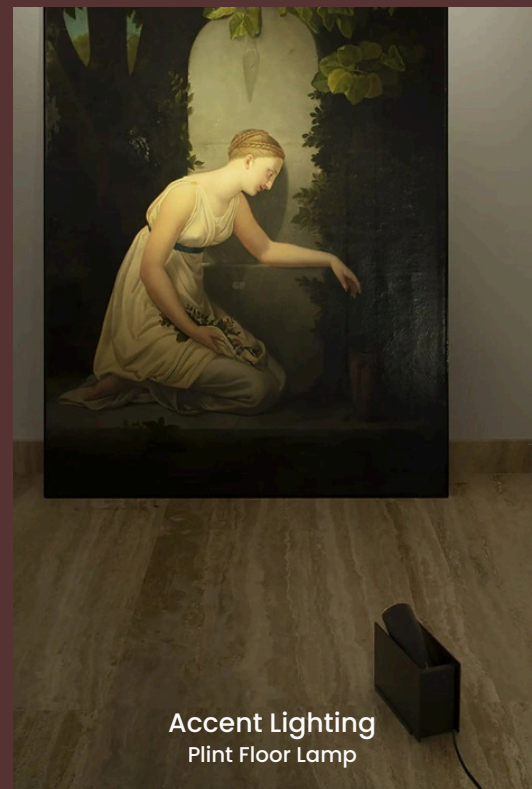
# THE TYPES OF LIGHTING



**Task Lighting**  
Focus Wall Light



**Ambient Lighting**  
Yasuke Table Lamp



**Accent Lighting**  
Plint Floor Lamp

First thing's first, understanding the types of lighting is essential for creating a well-lit and functional space. Here are the three main types of artificial lighting that you should know about:

## **Ambient Lighting – Your Foundation Layer**

This is your room's main light source, casting an even glow that fills the space. Think pendant lights, wall lights, ceiling fixtures, or recessed lighting, perfect for setting a warm, inviting tone in living rooms, dining rooms, and bedrooms.

## **Task Lighting – Focused & Functional**

Bright and direct, task lighting supports activities like cooking, reading, or working.

Under-cabinet kitchen lighting, desk lamps, and bedside reading lights are all great examples.

## **Accent Lighting – Design with Drama**

Used to highlight artwork, architectural details, or textured walls, accent lighting adds depth and visual interest. Spotlights, wall washers, and uplights are all effective – but less is more to avoid overwhelming the space.

Observe how daylight moves through your home, then layer these three types to create lighting that's both practical and beautiful.

# LAYER YOUR LIGHTING



Lampe de Marseille Wall Light  
Project: Summer Hill Residence by Lucia B Creative and Pivot Studio  
Photography: Lucia B Creative



Orb Sur Wall Light

Beautiful lighting doesn't come from a single source, it's about layering. By combining ambient, task, and accent lighting, you can shape how a room looks, feels, and functions throughout the day. A well-layered scheme gives you flexibility, balance, and the ability to set the right mood for every occasion.

**Start with ambient light** as the foundation, then build around it with more focused layers.

**Add task lighting** where you need it most. Kitchens, bathrooms, and reading nooks all benefit from bright, functional light.

**Bring in accent lighting** to highlight artwork, textures, or architectural features and add personality.

**Mix light sources** at different heights - ceilings, walls, floors, and even furniture to create depth and reduce shadows.

**Always use dimmers** where possible, giving you control to shift from bright and functional to soft and atmospheric.

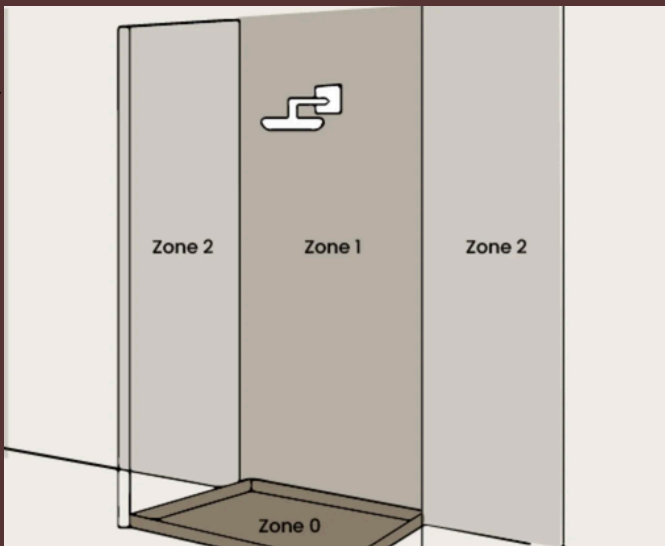
**Think flow** - ensure layers work together across open-plan areas so spaces feel cohesive, not disjointed.

When layered well, lighting becomes more than just functional - it creates atmosphere, flexibility, and a designer finish in every room.

# IP-RATING & BATHROOM ZONES

Bathroom lighting must be carefully selected to handle moisture and potential water contact. To ensure safety, fittings are assigned IP (Ingress Protection) ratings, which indicate resistance to dust and water.

- **IP20:** No water protection
- **IP44:** Splash resistant (common in bathrooms)
- **IP65:** Dust tight and resistant to water jets (ideal for showers)



Bathrooms are divided into zones that reflect how close a fitting is to water, with each zone requiring a minimum IP:

- **Zone 0 – Inside the bath or shower; requires IP67 and must be low voltage (max 12V).**
- **Zone 1 – Above the bath or shower, up to 2.25m from the floor; minimum IP44, though IP65 is recommended.**
- **Zone 2 – 0.6m around the bath or shower and up to 2.25m high; requires at least IP44.**
- **Zone 3 – At least 0.6m away from any water course; no strict IP rating required, but IP20 or higher is acceptable.**

By combining the right IP rating with the correct bathroom zone, you can ensure your lighting is safe, compliant, and still stylish enough to suit your design.

## KEY TAKEAWAYS

- ◆ Closer to water = higher IP rating.
- ◆ Follow zone rules for safety.
- ◆ Check with Nook or your electrician if unsure.



Avignon Round Wall Light  
Project: The Mill House by Holm & Wood and JA Schiller Building and Construction  
Photography: Monique Lovick

# COLOUR TEMPERATURE

Colour temperature plays a crucial role in how a room feels and functions, yet it's often overlooked in lighting design. Measured in Kelvins (K), it determines whether light appears warm and cosy, crisp and neutral, or cool and energising. The right choice can enhance your home's atmosphere, complement its colour palette, and even influence mood and productivity. Warm tones (lower Kelvins) create an inviting, relaxing environment, while cooler tones (higher Kelvins) promote focus and clarity.

By understanding how colour temperature affects both aesthetics and practicality, you can select lighting that not only looks beautiful but also supports the way each space is used.

## Warm White (2700–3000K)

Cosy and inviting; best for living rooms, bedrooms, and dining areas.

## Neutral White (3100–4500K)

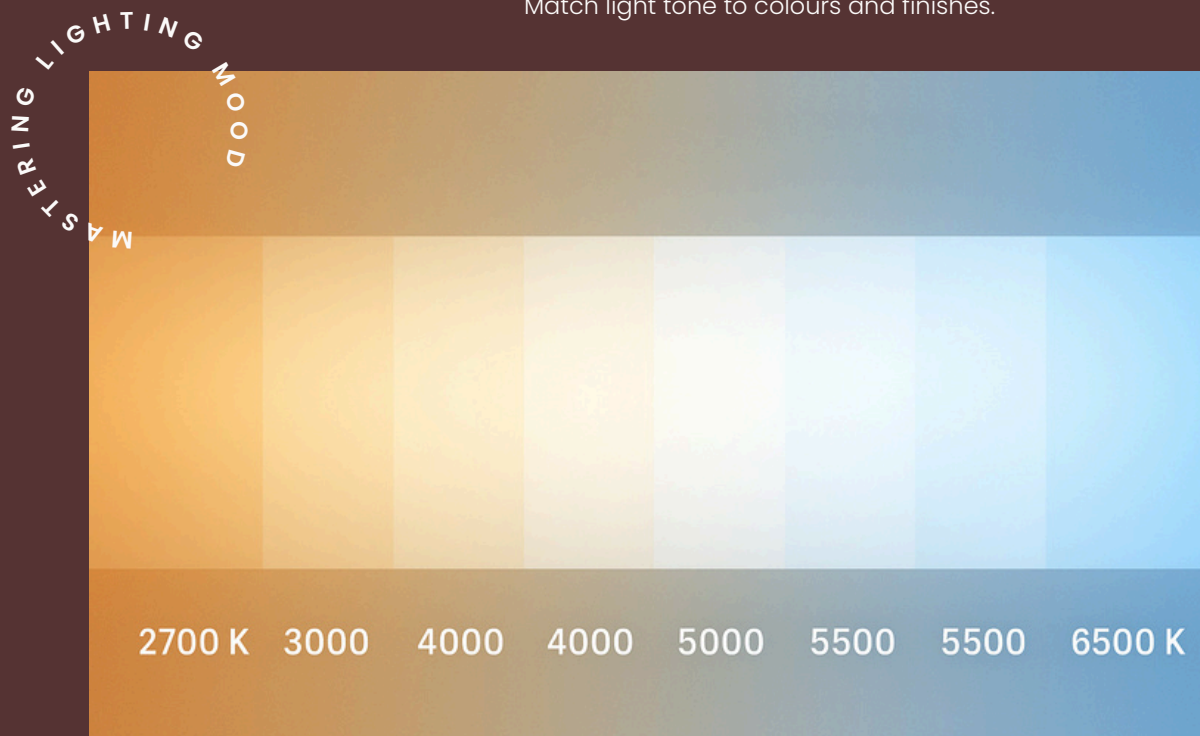
Balanced and bright; ideal for kitchens, bathrooms, and home offices.


## Cool White (4600–6500K)

Crisp and energising; perfect for workshops, garages, retail spaces, and some accent lighting.

### CHOOSING FACTORS

- ◆ **Room Use**  
Warm for relaxing, cool for tasks.
- ◆ **Preference**  
Warm feels cosy, cool feels bright.
- ◆ **Décor**  
Match light tone to colours and finishes.



A modern dining room with two circular pendant lights hanging over a wooden table and chairs. The lights are illuminated, casting a warm glow. The room has a minimalist aesthetic with a light-colored wall and a dark floor.

*The colour of light shapes how a home feels – warmth, calm, and energy all flow from the glow that surrounds you. The right light doesn't just brighten your home, it transforms the way you live in it.*

# MODULE TWO



A-Tube Ceiling Light

## A ROOM-BY-ROOM GUIDE FOR RENOVATORS & NEW BUILDS

Think of lighting as more than just a practical necessity, it's one of the most powerful design tools in your home. The right lighting plan doesn't simply make a room usable, it shapes the atmosphere, influences mood, and brings out the very best in your finishes and furnishings. When it's done well, lighting feels almost invisible, everything just works. When it's not, even the most beautifully designed room can fall flat.

Each room has its own rhythm and purpose, and the lighting should reflect that. In the kitchen, you'll want crisp, focused task lighting for chopping, cooking, and entertaining but you'll also need softer layers to transition the space from "busy hub" to "wine and conversation."

Living rooms thrive on flexibility: one moment the light is bright and open for gatherings, the next it's subdued and intimate for a movie night. Bedrooms ask for something gentler, a cocoon of ambient light paired with clever, unobtrusive task lights for reading or getting dressed. Even bathrooms deserve more than functional glare – balanced, flattering illumination at the mirror can change how you feel as you start your day, while dimmed ambient light can turn an evening bath into a ritual.

But here's the secret: lighting isn't just about function, it's a design statement in itself. A pendant can anchor a dining table like a piece of jewellery. Wall sconces can sculpt a hallway into something dramatic.



Orb Air Pendant Light  
Project: Sorrento Residence by David Wilkes Design and Van Rhyn Designs  
Photography: Finesse Property Photography

Even the smallest detail, like where you hide an LED strip, can completely shift the mood. The scale of a fixture, the height of your ceilings, the way natural light moves through the space, these are all part of the conversation. And don't forget the modern magic of dimmers and smart controls; they're what make lighting dynamic rather than static.

In this section, we'll walk you through each room of the house, not with rigid rules, but with the kind of insights and cues a designer uses to craft both function and feeling. By the end, you'll see your spaces differently not just in terms of what needs to be lit, but how you want to live in the light.

#### WHAT YOU'LL LEARN

- ◆ Learn how to avoid the most common lighting mistakes that leave spaces feeling flat or impersonal.
- ◆ Understand how to layer different types of light to shape atmosphere and mood in every room.
- ◆ Gain confidence choosing IP-rated lights that balance safety and style in bathrooms and wet areas.
- ◆ Explore how colour temperature affects the way your home feels, from calm and cosy to bright and energising.

*This guide is a starting point. Every home is unique.  
For personalised help, [reach out to our team](#).*

## LIGHTING BY ROOM

# KITCHEN LIGHTING

Lighting is one of the most transformative elements in kitchen design, shaping how the space looks, feels, and functions. A well-planned scheme balances bright, focused task lighting for food preparation with softer ambient and accent lighting to set the mood when dining or entertaining. Statement pendants over an island add style and character hang them around 70–80cm above the surface for perfect proportion and comfort.

Under-cabinet lighting is invaluable for eliminating shadows on work surfaces, while dimmers let you transition effortlessly from crisp, functional brightness to a softer, more inviting glow.

Every fixture has a role to play, and by layering light sources thoughtfully, your kitchen can be both highly practical and beautifully atmospheric.

- ◆ Layered lighting: downlights + pendants + under-cabinet.
- ◆ Island pendants: hang 70–80cm above surface.
- ◆ Use under-cabinet lighting to eliminate shadows on work surfaces.
- ◆ Consider dimmers to switch from bright cooking light to softer entertaining light.

[DISCOVER KITCHEN LIGHTING](#)



Wobbly Ceiling Light



Honey Pendant Light



Huntington Linear Pendant  
Huntington Wall Light

## LIGHTING BY ROOM

**LIVING ROOM LIGHTING**

Living room lighting should adapt to every occasion bright and open for entertaining, warm and cosy for unwinding. Relying on overhead lights alone can make the space feel flat and uninspiring, so layer your lighting to bring depth, flexibility, and visual interest. Start with ambient light from ceiling fixtures to set the overall tone, then add accent light from wall sconces or picture lights to draw the eye to architectural details, artwork, or textured finishes. Complete the scheme with task lighting from floor or table lamps to support reading, working, or other focused activities. Choose dimmable warm lighting (2700–3000K) so you can instantly adjust the mood, shifting from lively and bright to soft and intimate.

When each light source has a clear role and is positioned with intention, your living room becomes a versatile, comfortable, and beautifully lit space that feels as good as it looks.

- ◆ Avoid relying solely on overheads.
- ◆ Dimmable warm lights make this space feel cosy and versatile.
- ◆ Highlight architectural details or artwork with accent lighting.
- ◆ Layer with ambient (ceiling), accent (wall lights), and task (floor/table lamps).

DISCOVER LIVING ROOM LIGHTING

FLEXIBLE LIGHTING FOR DAY & NIGHT



Dorica Floor Lamp



CM2 Wall Light



Brim Pendant Light

## LIGHTING BY ROOM

***DINING ROOM LIGHTING***

Dining rooms are more than just a place to eat they're spaces for connection, celebration, and sometimes even work or creativity. In a room that serves many purposes, lighting should balance function with atmosphere. Dimmable warm lighting (2700–3000K) lets you switch easily from bright, practical light for group meals or projects to a softer glow for intimate dinners and relaxed conversations.

Your pendant or chandelier is often the focal point, so choose one that's both stylish and proportionate. For square or round tables, keep the fixture within the table's dimensions; for rectangular tables, opt for a pair of pendants or a single linear design running the table's length.

Hang it around 76cm above the surface for comfort and clear sightlines, then layer with wall lights or accent lighting to add depth and infuse personality.

- ◆ Keep pendants proportionate to the dining room table.
- ◆ Hang fixtures around 76cm above the table for clear sightlines.
- ◆ Use dimmable lighting to shift from bright meals to intimate ambience.
- ◆ Layer lighting with wall lights or accents to add depth and character.

DISCOVER DINING ROOM LIGHTING



Pebble Oval Pendant Light  
Pebble Ellipse Pendant Light



Reflector Linear Pendant Light



Arden Pendant Light



## LIGHTING BY ROOM

**BATHROOM LIGHTING**

The bathroom is where we begin and end our days, making good lighting essential for both style and function. It's a space that demands the right balance of beauty, safety, and durability, especially in moisture-prone areas. IP-rated fixtures are key here, ensuring your lighting can withstand humidity and water exposure while looking great. From sleek modern vanity lights to timeless wall sconces, the right choice can transform your bathroom into a well-lit, inviting retreat.

When planning, it's important to understand bathroom zones and their IP ratings. Zones 0–2 cover areas in and around showers, baths, and basins, where fixtures need higher protection (IP44–IP67). Zone 3 sits outside splash-prone areas, where style can

take centre stage but moisture resistance is still a smart choice. Knowing these zones will help you select lights that are not only beautiful but safe.

- ◆ Use face-level lighting on either side of the mirror.
- ◆ Add a downlight above the basin for extra support and task light.
- ◆ Add ambient ceiling light for general brightness.
- ◆ Lighting in bathrooms should IP-Rated (IP44+ and Bathroom Zone 3).

[DISCOVER BATHROOM LIGHTING](#)

PRACTICAL + FLATTERING



Lochan Sphere Wall Light



Coral Trio Off Centered Pendant Light



Dome Air Wall Light

## LIGHTING BY ROOM

***BEDROOM LIGHTING***

Bedroom lighting is all about creating a tranquil retreat that feels both restful and stylish. Ambient lighting sets the foundation, filling the room with a soft glow that promotes relaxation and comfort. Layering in task lighting, such as bedside lamps or adjustable wall lights, provides the practicality you need for nighttime reading or getting ready, without compromising on atmosphere. Accent lighting, whether through pendants, decorative fixtures, or subtle wall sconces, adds character and depth, elevating the overall design.

The right mix of lighting brings both warmth and sophistication to your bedroom. Dimmable fixtures allow you to adjust brightness throughout the day, while warmer tones foster a cosy, intimate mood.

By combining ambient, task, and accent lighting, you create not just functionality but also a sense of intention transforming the bedroom into a serene sanctuary that reflects your style.

- ◆ Warm, low-glare lighting for ambience.
- ◆ Bedside wall lights or pendants instead of harsh overheads.
- ◆ Reading lights with directional control.
- ◆ Smart globes/dimmers for full mood control.

[DISCOVER BEDROOM LIGHTING](#)

CALMING, SOFT, AND LAYERED



Elma Wall Light



Birdy Swing Table Lamp



Ascoli Single Switched Wall Light

## LIGHTING BY ROOM

**VOID LIGHTING**

Void lighting is a chance to make a bold design statement while providing essential illumination to expansive spaces like stairwells, atriums, and double-height entryways. These areas demand fixtures with real presence from grand chandeliers that anchor the room to clusters of pendants that add a modern, sculptural touch. Drop height matters: lights should hang low enough to create impact and provide coverage, without obstructing views or movement.

For the best effect, combine your main feature with wall lights or recessed fittings to avoid shadowed upper areas. Dimmers offer control over brightness and mood, while durable fixtures, long-life bulbs or even integrated LED fixtures ensure your lighting remains both beautiful and practical in hard-to-reach spaces.

With thoughtful design, void lighting becomes more than illumination, it's a statement piece that defines the space.

- ◆ Choose oversized fixtures to suit the scale of tall, open spaces.
- ◆ Hang pendants at a height that creates impact without blocking views.
- ◆ Layer with wall or recessed lighting to eliminate dark zones.
- ◆ Add dimmers for flexible ambience in day and night settings.

DISCOVER VOID LIGHTING



Organic Pendant Light



Gravity 2 Pendant Light



Random Solo Pendant Light

BOLD, UNIQUELY YOURS

## LIGHTING BY ROOM

**HALLWAY LIGHTING**

Hallway lighting plays a crucial role in setting the tone for your home, offering both style and function in transitional spaces like corridors, passageways, and entryways. The right design enhances visibility, adds character, and creates a welcoming flow between rooms.

Combining pendant lights, ceiling fixtures, and wall sconces can bring depth and variety, while ensuring light reaches every corner. Keep fixtures proportionate to the hallway's scale, use warm tones to create an inviting atmosphere, and consider dimmers for adjusting brightness throughout the day.

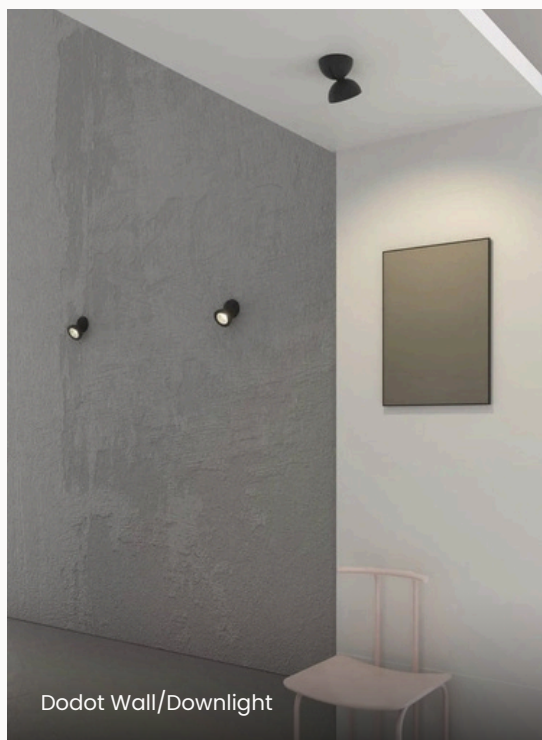
Adding accent lighting to highlight artwork or architectural details can turn these "unseen spaces" into design features, bringing warmth, personality, and a sense of cohesion to the pathways that guide you through your home.

- ◆ Highlight artwork or features with accent lighting.
- ◆ Use warm light to create an inviting feel.
- ◆ Match fixture scale to the hallway's size.
- ◆ Space fixtures evenly to avoid dark spots.

DISCOVER HALLWAY LIGHTING



Over Me Ceiling/Wall Light



Dodot Wall/Downlight



Nautilus Wall Light

THAT CONNECT THE HOME LIGHTS

## LIGHTING BY ROOM

**KIDS' ROOM LIGHTING**

Lighting in children's rooms should do more than simply illuminate, it should create a warm, safe, and imaginative environment that evolves with them as they grow. The most effective schemes blend functionality with playful design, supporting everything from cosy bedtime stories to energetic playtime and focused homework sessions.

Soft bedside lamps or gentle night lights provide a comforting glow that helps little ones settle, while whimsical pendants or themed fixtures add personality and spark creativity. For reading and study time, well-positioned desk lamps or adjustable task lights deliver the right level of brightness to keep young minds engaged without causing eye strain.

Incorporating lighting that adapts to different moods and activities ensures the space is both practical and inspiring, no matter the stage of childhood.

- ◆ Add dimmers to switch between playtime and bedtime moods.
- ◆ Pick safe, durable fixtures and manage cords securely.
- ◆ Use warm light (2700–3000K) for a calming atmosphere.
- ◆ Layer with ambient, task, and accent lighting for flexibility.

[DISCOVER KIDS' ROOM LIGHTING](#)

FUN, DURABLE & ADJUSTABLE



Gaston Wall Light



Buddy Table Lamp



Explore Wall Light

## LIGHTING BY ROOM

**HOME OFFICE LIGHTING**

Lighting in your home office should balance focus and comfort. Task lighting such as adjustable desk lamps or directional wall lights provides precision for reading, writing, and computer work, while ambient options like pendants or ceiling lights soften shadows and reduce eye strain. Together, they create a functional base that supports both productivity and design.

To enhance the space further, layer in accent lighting with a decorative floor lamp, sculptural wall light, or subtle backlighting. These touches add warmth and personality, ensuring your office feels inviting rather than clinical. Simple choices like lamp placement or dimmers, keep the space adaptable.

A well-lit office should feel sharp, motivating, and flexible, blending practicality with the intention of designer lighting to create a workspace that inspires your best work.

- ◆ Position your desk lamp opposite your writing hand to avoid casting shadows.
- ◆ Layer task, ambient, and accent lighting for flexibility throughout the day.
- ◆ Use dimmable fixtures to shift between focused work and softer ambience.
- ◆ Choose adjustable fixtures to direct light exactly where you need it.

DISCOVER HOME OFFICE LIGHTING



Focus Wall Light



Tolomeo Micro Table Lamp



Compendium Pendant Light

# UNSEEN SPACES

Unseen spaces from stairwells and alcoves to under-stairs, powder rooms, and quiet corners are often overlooked in home design, yet they hold incredible potential. These small or transitional zones can become some of the most memorable moments in a home when illuminated with intention. The right lighting brings focus, beauty, and functionality, guiding movement while enhancing architectural features.

Whether you choose minimalist fixtures that blend seamlessly into walls and ceilings or bold, sculptural designs that command attention, lighting transforms these pass-through areas into meaningful design statements. Thoughtfully considered, even the smallest spaces can leave a lasting impression.

Lighting the *unexpected* is  
the mark of a designer.

- ◆ Use accent lighting to highlight architectural details or textures.
- ◆ Choose fixtures that fit the scale and character of the space.
- ◆ Add dimmers to adjust brightness and create subtle ambience.

# DESIGNING YOUR SPACE

Now that you've explored our tips and advice for each room, it's time to apply them to your own space. Think of this as your personal design exercise, whether for your whole house or just one room. Start with a few key questions:

**01****What is the size of the room?**

---

---

**02****How high are the ceilings?**

This helps determine pendant vs. flush fittings, and the drop height for key areas.

---

---

**03****What is the purpose of the space?**

Does it serve multiple functions, such as cooking and entertaining, etc.

---

---

**04****Are there features you want to highlight?**

Artwork, architectural details or statement features?

---

---

**05****How is the furniture and joinery laid out?**

Is it built-in to the space such as wardrobes or cabinetry?

---

---

**06****What finishes and materials are you working with?**

---

---

By answering these questions, you can start to see how your lighting should support the way you live. Not sure where to begin? Our team can help you translate these steps into a tailored lighting plan for your home - [contact our lighting experts](#)

## OUR DESIGN PROCESS FOR

# LAYER LIGHTING

Many people begin their lighting plan with downlights, but that limits your ability to layer effectively. We recommend the following process to achieve designing with intention.

### START WITH STATEMENT PIECES

Anchor the room with pendants, chandeliers, or feature lights that define the space.

01

### ADD AMBIENT LAYERS

Introduce ceiling or wall lights to create a soft, even glow throughout the room.

02

### INCORPORATE TASK LIGHTING

Bring in focused light where activities happen – over benches, tables, or reading nooks.

03

### HIGHLIGHT WITH ACCENT LIGHTS

Use wall washers, picture lights, or strips to draw attention to features and textures.

04

### INTRODUCE TECHNICAL LAYERS

Add recessed lights, cans, or strips for subtle support and flexibility.

05

### FINISH WITH CONTROL

Install dimmers and smart controls to adjust mood and function with ease.

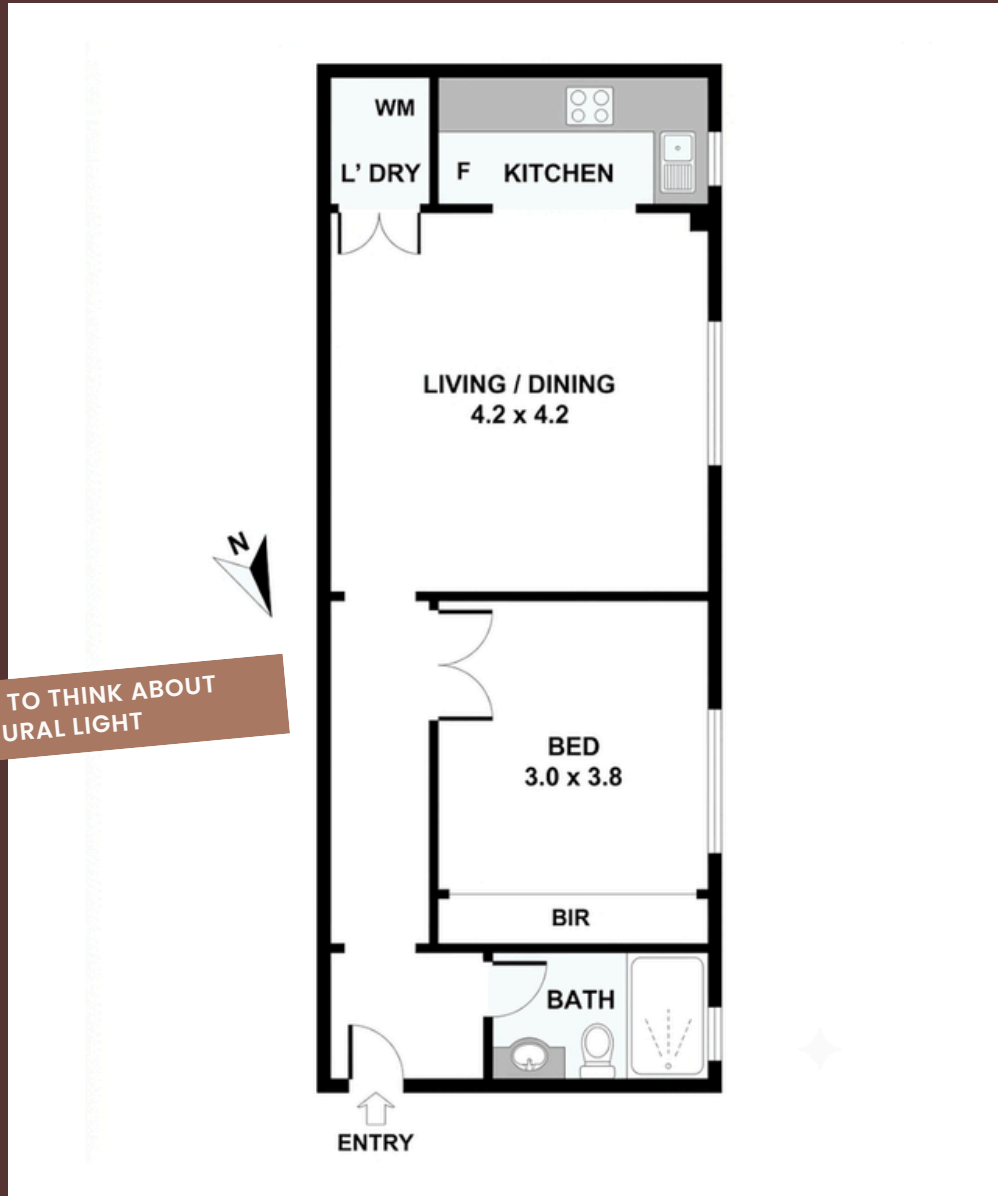
06

Not sure where to begin? Our team can help you translate these steps into a tailored lighting plan for your home.

[Contact our lighting experts](#)

HOW WOULD YOU LIGHT THIS SPACE?

# DESIGN CHALLENGE

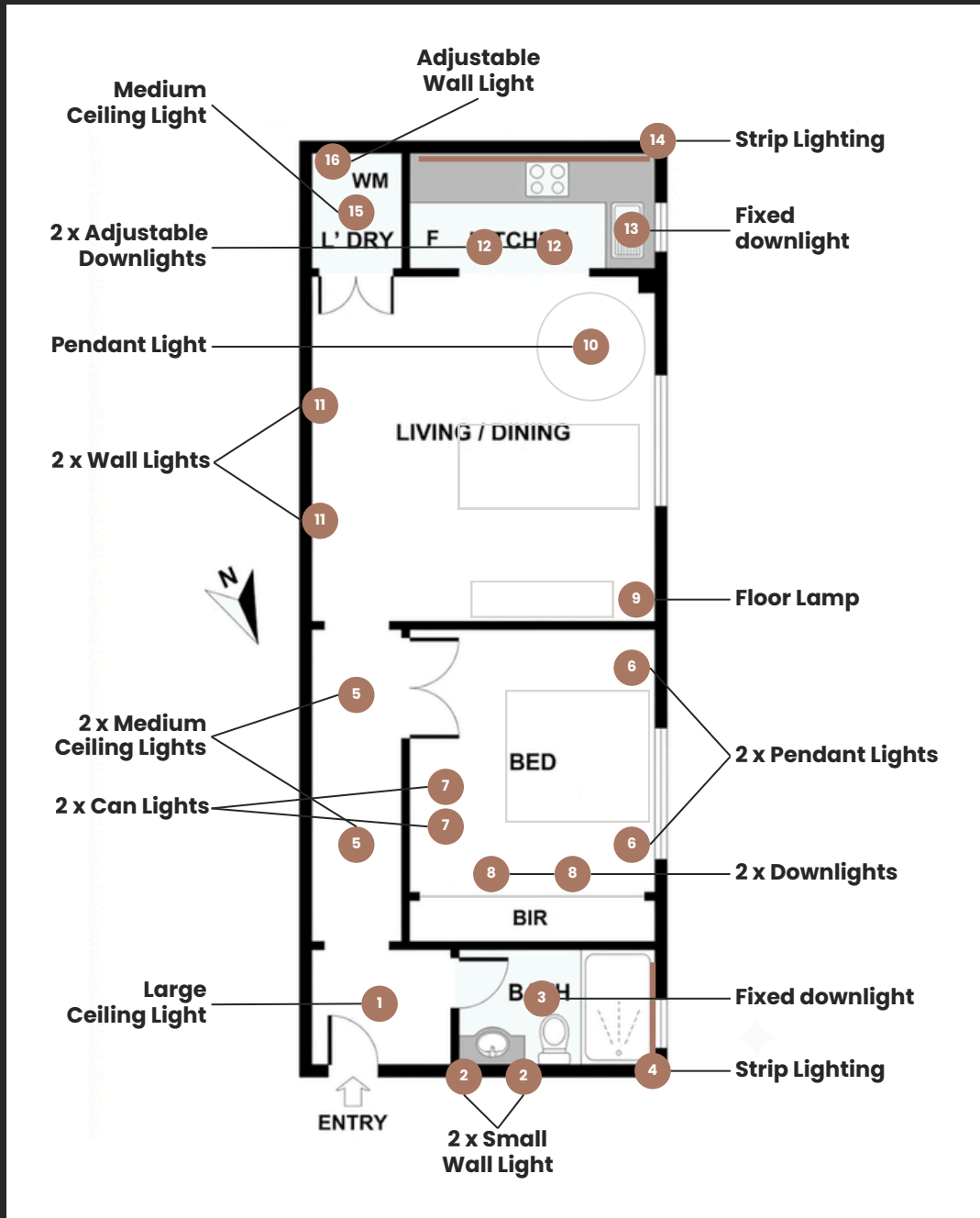


Now, that you have explored different types of lighting & rooms and you have a better understanding, let's check the left drawings of a one-bedroom apartment and let's find out how to lit the space.

Take some time to digest the notions and list what you would if this was your space!

## OUR RECOMMENDATION

# PLAN & ILLUMINATE



Start by thinking about the natural light your apartment receives, then anchor the space with statement pieces like the dining pendant (10) and bedside pendants (6) to define key zones. From there, add task lighting where you need focus such as adjustable downlights (12) in the kitchen, before layering in ambient and accent pieces like wall lights (11) or uplighting to bring warmth, depth, and flexibility to every room.

The moodboard on the next page captures a minimalist Scandinavian style, using soft pendants, clean-lined wall lights, and natural textures to create a calm, cohesive atmosphere that feels both welcoming and intentional for this apartment.

# SCANDINAVIAN/MINIMALIST STYLE

# MOODBOARD

01

## DIOSCURI CEILING LIGHT

Zones: 1,2,5 & 18

Used as overhead lighting in the entry, hallway, and laundry, with varying sizes that create striking focal points while maintaining a cohesive flow through each space to define distinct zones.



## NENDO PENDANT LIGHT

A soft textile pendant light allows for both task lighting and ambient lighting.

10



## TERRA 00 PENDANT LIGHT

A minimalist fixture paired with a dimmable bulb and switch creates adjustable lighting for different moods.

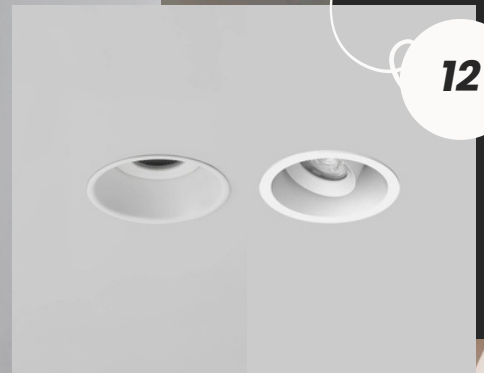
06



## PUNTO DOWNLIGHTS

Zones: 1,7,2,5 & 18  
Option of fixed or adjustable downlight. Allows for minimalist task lighting.

12



9

## LUNA FLOOR LAMP

This space can't accommodate bulky lamps, and glare near the TV must be avoided. This lamp adds height and light, brightening the corner without overwhelming it.



16

## TOLOMEO FARETTO LED WALL LIGHT

sleek and functional fixture perfect for controlled lighting.



11

## CM2 WALL LIGHT

Wall washer uplight offers glare-free illumination, providing an alternative to ceiling lights or downlights.



# MODULE THREE



Arti Wall Light & Arti Pendant Light  
Project: The Mill House by Holm & Wood and JA Schiller Building and Construction  
Photography: Monique Lovick

## STYLE, MATERIAL & FINISH MATTERS

Choosing the right lighting isn't just about function - it's about finding pieces that feel at home in your space. Style, finish, and material all play a big role in how a light transforms a room, tying your interiors together and setting the mood. From sleek contemporary designs to timeless classics, from warm brass to soft linen shades, the details you choose shape the personality of your home.

And if you're not sure what your style is - don't worry. That's where we come in. Our team and curated collections are here to guide you.

### WHAT YOU'LL LEARN

- ◆ How different styles of lighting can complement your home's overall design.
- ◆ The impact of materials like brass, ceramic, glass, and fabric.
- ◆ How finishes - polished, matte, or textured influence atmosphere and cohesion.
- ◆ Where to start if you're unsure of your personal style.

*This guide is a starting point. Every home is unique.  
For personalised help, [reach out to our team](#).*

# LIGHTING YOUR STYLE

MORE THAN FUNCTION

Every interior style has a unique personality, and lighting is the key to bringing it to life. By understanding the core principles of each aesthetic, you can select and layer lighting that is both functional and perfectly suited to the design.



Bs2 Mini Wall Light

## CONTEMPORARY LIGHTING

Contemporary lighting embraces clean lines, simple forms, and modern finishes. Matte black, polished chrome, or minimalist white fittings create a sleek, architectural feel that complements open spaces and uncluttered interiors.

[EXPLORE CONTEMPORARY STYLE](#)

## TRADITIONAL LIGHTING

Traditional interiors shine with timeless details - chandeliers, lantern pendants, and fabric-shaded sconces in warm brass or bronze. These pieces bring elegance, warmth, and a sense of heritage to dining rooms, living spaces, and entryways. Not quite traditional? Modern Classic blends the modern & traditional style.

[EXPLORE TRADITIONAL STYLE](#)



Somerset Pendant Light

## MID-CENTURY LIGHTING

Mid-century design is all about bold, sculptural silhouettes and natural materials. Look for fixtures in wood, brass, or opal glass with geometric forms that double as art, adding character and style to everyday living.

[EXPLORE MID-CENTURY STYLE](#)



Reflector Linear Pendant Light



Dorica Floor Lamp

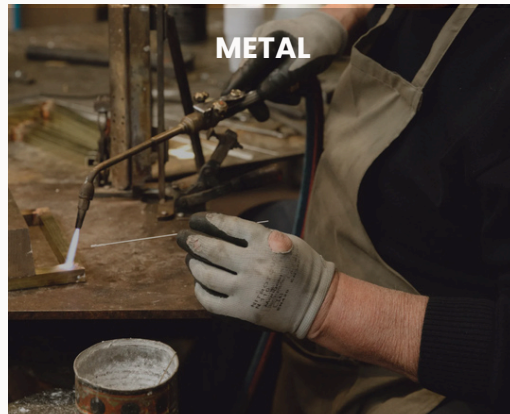
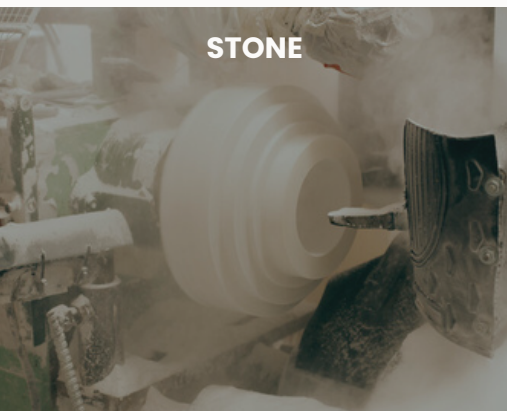
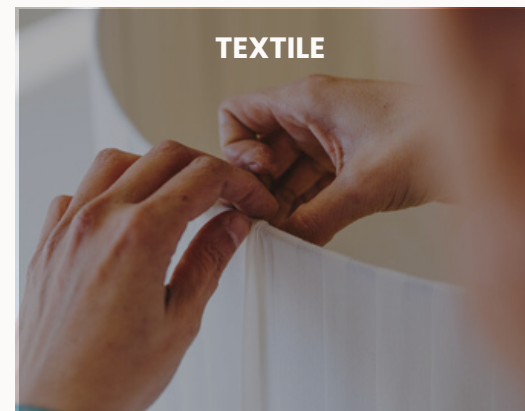
## SCANDINAVIAN LIGHTING

Scandinavian lighting blends simplicity with warmth. Light woods, white finishes, and soft textile shades create a calming atmosphere, perfect for relaxed, cosy spaces where comfort and functionality are equally important.

[EXPLORE SCANDINAVIAN STYLE](#)

No matter your preferred aesthetic, the right lighting can bring it to life and make your home feel cohesive and intentional. Explore our curated collections to find fixtures that reflect your style, or take our Lighting Style Quiz if you're unsure where to begin - it's the perfect first step to discovering the look that feels just right for your home.

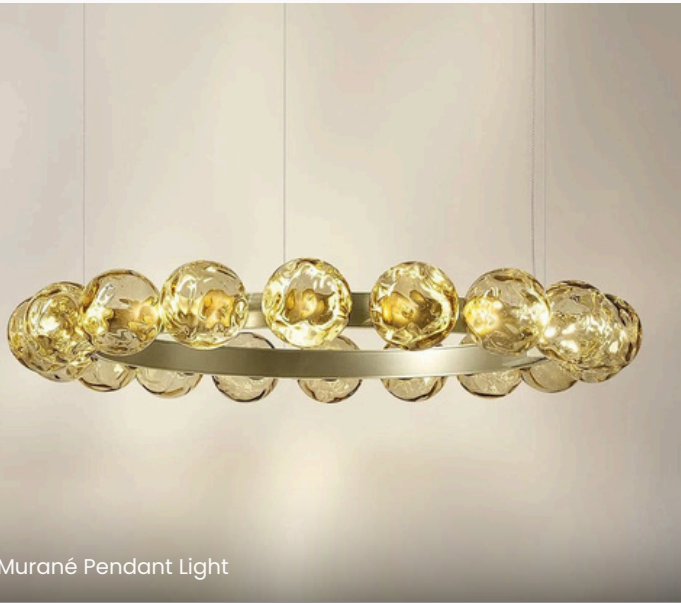
# THE *IMPACT* OF MATERIALS

**GLASS****METAL****CERAMIC****STONE****WOOD****TEXTILE**

Materials shape how a fixture feels just as much as how it looks. Metals like brass or bronze add warmth and luxury, while blackened steel or chrome bring strength and edge. Glass can soften light or make a bold statement, whether frosted, ribbed, or smoked. Textiles like linen shades create intimacy and diffuse light for a atmosphere. Wood adds natural texture and warmth,

perfect for relaxed or organic spaces. Ceramic fixtures feel artisanal and tactile, often blending seamlessly into walls or ceilings. Stone offers grounding weight and timeless beauty, turning even simple fittings into sculptural accents. Together, these materials create layers of texture that elevate your interiors.

# HOW *FINISHES* *INFLUENCE A SPACE*

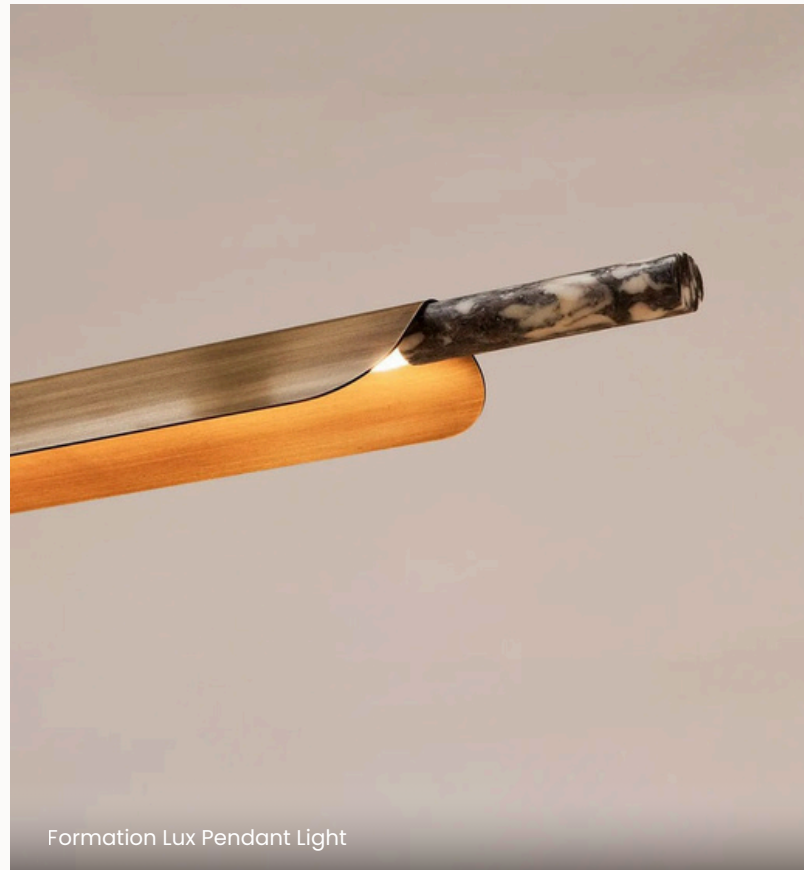


Murané Pendant Light

The finish of a light fitting can completely shift its effect in a room. Polished finishes reflect light and add a sleek, modern edge, while matte surfaces feel understated and contemporary, blending effortlessly with their surroundings. Textured finishes, hammered metal, ribbed glass, woven fabrics, bring depth and character, turning lighting into a statement feature.

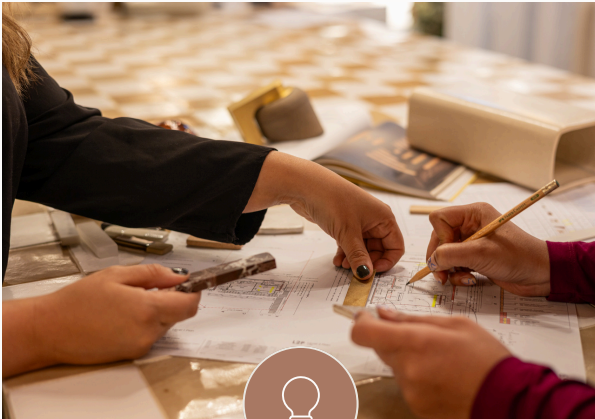
By matching finishes to your existing décor, whether that's hardware, furnishings, or flooring, you create cohesion that ties the whole space together. The right finish doesn't just complement the room, it elevates it.

- 01** Match lighting with hardware for a cohesive look.
- 02** Use contrast wisely - polished for impact, matte for subtlety.
- 03** Choose timeless finishes that won't date quickly.
- 04** Remember maintenance - matte hides marks, polished shows fingerprints.
- 05** Mix finishes with intention and repeat them for balance.










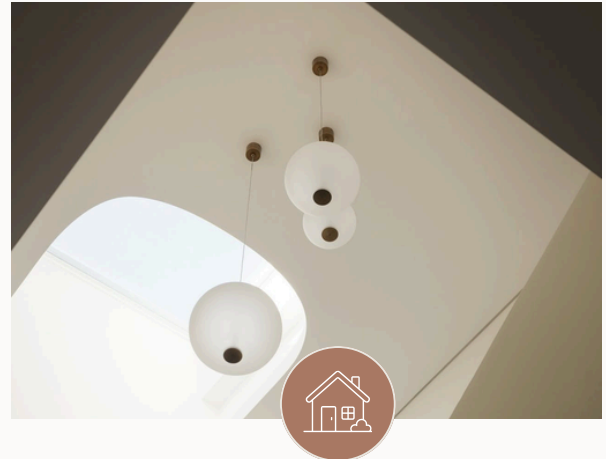
Formation Lux Pendant Light

# LIGHTING PLAN CHECKLIST



## RENOVATOR'S LIGHTING PLAN

-  Review your current lighting setup and identify underlit or outdated areas.
-  Check existing wiring and ceiling access for any upgrade limitations.
-  Match new lighting to your updated interiors, think both style and scale.
-  Add layers of light (ambient, task, accent) for flexibility and depth.
-  Upgrade to dimmers and energy-efficient LEDs where possible.
-  Explore Nook's curated collections to discover pieces that fit your home.
-  Speak to our lighting consultant to finalise your plan & further assistance.



## NEW BUILDING LIGHTING PLAN

-  Plan lighting with your building plans for intentional design.
-  Ensure every room has ambient, task, and accent lighting covered.
-  Plan statement pieces early (pendants, chandeliers, etc).
-  Include smart wiring or automation for future-proof flexibility.
-  Choose energy-efficient, quality fixtures for the right IP fittings.
-  Browse Nook's curated collections to align lighting with your design vision.
-  Consult our lighting designer for full design service available.

LIGHTING IS THE DETAIL  
THAT CHANGES EVERYTHING.

# THANK YOU FOR LETTING US *LIGHT* THE WAY

*We're so grateful you've taken the time to explore our Lighting Guide. At Nook Collections, we believe lighting has the power to transform not just your home, but the way you live in it - making everyday spaces warmer, brighter, and more beautiful.*

*Thank you for choosing to spend this time with us. We hope this e-book has inspired you with ideas, tips, and confidence to approach your lighting like a designer. And remember, whether you're renovating or building new, we're here to help guide you in finding the perfect pieces to bring your vision to life.*

GET INSPIRED. VISIT NOOK'S WEBSITE

BOOK A CONSULTATION



NOOK\_COLLECTIONS



NOOKCOLLECTIONS